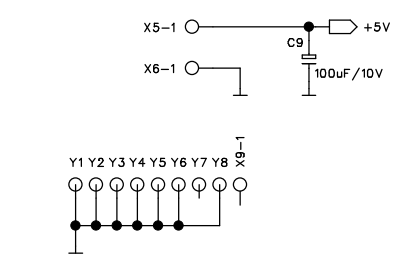


- C1 ○ X7-1
- C5 ○ X7-2
- C4 ○ X7-3
- C3 ○ X7-4
- C6 ○ X7-5
- C8 ○ X7-6
- C2 ○ X7-7
- C9 ○ X7-8
- C0 ○ X7-9
- C7 ○ X7-10
- C1 ○ X71-1
- C5 ○ X71-2
- C4 ○ X71-3
- C3 ○ X71-4
- C6 ○ X71-5
- C8 ○ X71-6
- C2 ○ X71-7
- C9 ○ X71-8
- C0 ○ X71-9
- C7 ○ X71-10
- C7 ○ X0-91
- C0 ○ 16
- C1 ○ 15
- C2 ○ 1
- C3 ○ 2
- C4 ○ 8
- C5 ○ 9
- C6 ○ 3
- C7 ○ 14
- C8 ○ 5
- C9 ○ 11
- C0 ○ 6
- C1 ○ 10
- C2 ○ 7
- C3 ○ 1
- C4 ○ 2
- C5 ○ 8
- C6 ○ 9
- C7 ○ 3
- C8 ○ 4
- C9 ○ 14

- X4-10
- X4-9
- X4-8
- X4-7
- X4-6
- X4-5
- X4-4
- X4-3
- X4-2
- X4-1
- X41-10
- X41-9
- X41-8
- X41-7
- X41-6
- X41-5
- X41-4
- X41-3
- X41-2
- X41-1



INSTALL WIRE JUMPER INSTEAD A1 PINS 1-3
IF GPS-ANTENNA WORKS WITH 5V SUPPLY

REF.TO	PCB	NIXIE CLOCK IN12				PAGE	1/1
SCALE	DES.BY	27.01.2019	ERIK KONKA				
TITLE	CHECK						
TYPE	APPR						
	DWG NR.			REV.	DATE	DR.BY	APPR